

FIG 1

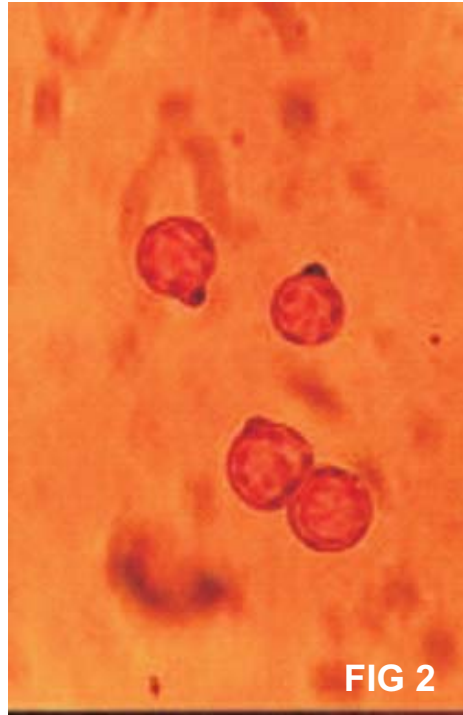


FIG 2



FIG 3



FIG 4

Figures 1-4. *Batkoa apiculata* (Thaxter) Humber mounted in lactophenol/aceto-orcein; this stain differentiates the nuclei and the granular nature of the highly condensed DNA that is a permanent feature of their contents.

Fig 1. Young conidiophores forming on the exterior of an infected mosquito; the broadly rounded apices of these cell will produce a narrow extension before the development of the single apical conidium.

Fig 2. Multinucleate, globose primary conidia with rounded basal papilla.

Fig 3. Early development of a (smaller) secondary conidium by a primary conidium; the nuclei and their granular contents are distinctly visible.

Fig 4. Primary conidia germinating by formation of germ tubes in which the large nuclei are usually visible in a single-file arrangement.